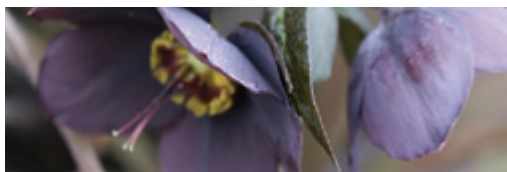
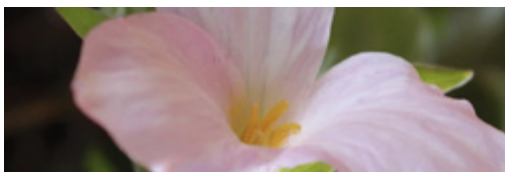




Snowdrop Gala

& Other Spring Treasures



at Mount Wolseley Hotel
Saturday 1st February 2020

SPEAKERS

Ross Barbour/Helen Picton & Catherine Erskine

Dear Snowdrop Lover,

The Galanthus Gala is taking place at Mount Wolseley Hotel, Tullow, Co. Carlow on Saturday, February 1st, 2020. Please fill in and return the booking form to Hester Forde at the address supplied if interested along with the number of tickets required and remittance.

Thanking You,
Hester Forde

PROGRAMME

- 9.30am** **Registration**, tea/coffee, biscuits
- 10.00am - 11.00am** **Catherine Erskine**
'The restoration of Cambo Stables and Gardens fuelled by Snowdrops'
- 11.30am - 12.30pm** **Ross Barbour and Helen Picton**
'Snowdrops need friends too'
- 12.45pm - 1.45pm** **Lunch at Mount Wolseley Hotel**
- 2.00pm - 5.00pm** **Visit to Altamont**
Guided tour with Paul Cutler
- Cost** **€90 before January 24th, 2020**
Cost includes lectures, lunch, admission to bulb sale, guided tour, afternoon tea and cake at Altamont.



Contact **Hester Forde, Coosheen Garden**
086 865 4972 hesterforde@gmail.com
Robert Miller, Altamont Plants
087 982 2135 sales@altamontplants.com

Full guided tour with Paul Cutler, Head Gardener at Altamont Gardens. Specialist Plant Sales with snowdrops from Avon Bulbs, Old Court Nurseries (Helen Picton/Ross Barbour) and Catherine Erskine, Cambo. Hellebores from Ashwood and Harvingtons at Altamont Plant Sales (Robert Miller). Snowdrops, narcissus and other Spring Bulbs from Coosheen Plants.

BOOKING FORM

I/We would like to attend the Galanthus Gala at Mount Wolseley Hotel.

Name(s)

Address

Telephone **Email**

Cost €90 [before January 24th, 2020]
Cost includes lectures, lunch, admission to bulb sale, guided tour, afternoon tea and cake at Altamont.

No. of tickets @ **TOTAL** €.....

Please make cheques payable to Robert Miller, Altamont Plants.

Please return booking form and remittance to Hester Forde, 'Coosheen', 15 Johnstown Park, Glounthaune, Co Cork.

Early booking advisable. No refunds. Ticket event, limited number.

Special accommodation rates available for Mount Wolseley, quote Snowdrop Gala (059) 918 0100, €85 for Dinner and Bed & Breakfast per person sharing per night, €40 single supplement per night. Limited number of rooms on offer so early booking advised. Please book directly with the hotel.



SPEAKERS



Catherine Erskine

'The restoration of Cambo Stables and Gardens fuelled by snowdrops'

Catherine Erskine has been a keen amateur gardener all her life. Her interest in snowdrops started when she came to live at Cambo Estate in 1976 and sought ways to make the walled garden pay its way. She launched Cambo Snowdrops, a mail order business, in 1986 as a way to increase income. This initiative developed into the Scottish Snowdrop Festival in 2007 and has now developed into Discover Scottish Gardens.

Catherine has been very involved with Scotland's Garden Scheme as a Garden owner, district organizer and trustee for many years.

Her lecture will cover how income generated from snowdrops and snowdrop visitors attracted by the Scottish Snowdrop Festival has given new life to Cambo Gardens. Cambo has a National Collection of Galanthus with over 350 different snowdrops.



Ross Barbour and Helen Picton

'Snowdrops need friends too'

Ross Barbour and Helen Picton have been running Old Court Nurseries and The Picton Garden since 2014 continuing the family tradition. Helen is third generation to be involved with the nursery, while Ross trained in Horticulture and spent many years as head gardener at Ragley Hall in Warwickshire before meeting and marrying Helen. While the nursery is famed for Michaelmas daisies both Ross and Helen have a keen interest in all plants particularly early season bulbs and woodland plants. Working within the mature woody structure planted by Helen's father, Paul, they have developed the late winter and spring display including an ever expanding collection of Galanthus.

Our title for the talk is 'Snowdrops need friends too' a joint talk covering the plethora of late winter and early spring companion plants for snowdrops, from the subtle to the vibrant.



Mount Wolseley Hotel

Mountwelseley, Tullow, Co. Carlow, R93 C9H0

+ 353 (0) 59 918 0100 www.mountwelseley.ie